



**LYNFIELD
COLLEGE**

NEWSLINK

NEWSLETTER 7 | 23 MAY 2024

From Tumuaki Cath Knell

He aha te mea nui o te ao

He tangata, he tangata, he tangata

What is the most important thing in the world?

It is the people, it is the people, it is the people.

Kia ora koutou

It has been lovely connecting with whānau supporting our students at their weekend sporting fixtures. Long may the sunny Saturdays continue!

Working collaboratively

We continue to work collaboratively with the NZ Police, AT (Auckland Transport) and other schools in support of addressing challenging behaviours in the wider community in support of student safety. Being proactive and working together is the best way we can make a difference.

Hei Mahi Tahi - Kā Hui

Next Friday Lynfield is hosting the nine Kāhui Ako school staff for the 2024 conference. The Lynfield Kāhui Ako kaupapa is Hei mahi tahi - working as one. We look forward to the new learnings and shared understanding that will come from this day. As the school will be closed on this day our next NewsLink will go out the following week.

Temporary buildings

With the closure of our Administration Building in October 2022, due to mould, the 25 displaced staff have been spread around the school. The MOE has worked on providing temporary accommodation for some of the displaced staff and we look forward to our Deans, Attendance, Accounts and International operating from the buildings that have been brought onsite by the beginning of Term 3.

Below: Deans, Attendance, Accounts



Nga mihi nui

Cath Knell

Tumuaki | Principal

IN THIS ISSUE

- *Message from Tumuaki Cath Knell*
- *Pink Shirt Day Celebrations*
- *Board Sport, Innovative, Creative Scholarships*
- *Aurora Australis*
- *Education Perfect Global Language Championship*
- *LC Social Media*
- *Have you downloaded our SchoolBridge App?*
- *Fan Club Ekko Park Gig*
- *Mystery Musical Production*
- *2OED Tawharanui Camp*
- *Individual Sport Honours*
- *Sports Scene*
- *Uniform & Stationery Shop*
- *IPUTI Wednesdays*
- *Watercare Services Notice*

COMING EVENTS

- **28, 29, 30 May**
LITNUM Assessments
- **Friday 31 May**
MOE Teacher Only Day
No classes on this day
- **Tuesday 11 June**
LC Road Race
- **Thursday 12 June**
Cultural & Leadership Photos
- **Tuesday 18–Saturday 22 June**
Production Week

Pink Shirt Day Celebrations

Pink Shirt Day is about working together to stop bullying by celebrating diversity and promoting kindness and inclusiveness.

It's about creating a community where all people feel safe, valued and respected, regardless of gender identity, sexual orientation, age, ability, religion or cultural background.

Pink Shirt Day is the day Aotearoa comes together to take a stand against bullying. The Mental Health Foundation of New Zealand (MHFNZ) has run the campaign since 2012, inspiring tangata to Kōrero Mai, Kōrero Atu, Mauri Tū, Mauri Ora – Speak Up, Stand Together, Stop Bullying!

Celebrated annually around the globe, Pink Shirt Day began in Canada in 2007 when two students took a stand against homophobic bullying after a new student was harassed for wearing pink.





Board Sport, Innovative and Creative Scholarships

On behalf of the Lynfield College School Board we are delighted to announce that the following students have been awarded a Sports or Creative, Innovative Scholarships:

Hola Afasa, Sohail Asyaban, Harry Baker, Rio Carron, William Hooper, Arnav Kumar, Markus Maertzschink, Troy Maka, Oliver Mun, Fiona Siaopo, Isaac Sun, Kevin Zhang.

Any student who is representing their chosen activity (sport or creative, innovative) at regional, national or international level may apply for a Lynfield College School Board funded Sports or Creative, Innovative Scholarships. Recipients may use the scholarship to assist with expenses directly related to the activity in which they excel while they are representing the College.

Year 12 Scholarship recipients were presented with their certificates at assembly, Friday 17 May.



Aurora Australis

Lynfield College students watched the wonders of the skies during the Aurora Australis display last weekend, and shared wonderful images. One of the best was by Thina Karunamuni (13PSD) which caught the different colours of the aurora reflecting in still waters.



The aurora are caused by particles from the sun emitted during a solar storm, sliding down the Earth's magnetic field to the poles, hitting the atoms in the atmosphere, and causing them to glow a bit like a fluorescent tube. Different atoms at different altitudes glow different colours. The sun is currently building to a period of 'solar maximum' when solar storms like this are more common, so if you missed them there is a possibility we could get another display later in winter. Fingers crossed! See other students' photos (and a very impressive timelapse video) at

<https://sites.google.com/lynfield.school.nz/lcaurora/home>

Education Perfect Global Language Championship

In Early May, our Lynfield College international language students competed in the Education Perfect Global Language Competition. This competition is entered by over 50 countries worldwide. This experience enhances learning motivation of various language skills (vocabulary, grammar, reading and listening strategies).

Congratulations to all our students, who achieved excellent results:

Lynfield College came 13th overall globally

Within New Zealand, Lynfield College came 4th overall

1st overall in Chinese in New Zealand

3rd overall in German in New Zealand

2nd overall in Japanese in New Zealand

Marcus Moore, Daniel Li and Jieun Kwon (Level 3 Japanese) were awarded Elite Medals (0.5% globally)

Daniel Li came 6th and Marcus Moore came in 12th in the global ranking (0.5% globally)

Emerald Award (1% globally)

Boran Lin
Ella Zhuang
William Lee
Carter Huang
Shaheem Riyas
Harrison Lowe

Gold Award (5% globally)

Joanne Kuang
Jacky Zhou
Yuri Higashiyama
Kelly Chen
Dorothy Chang
Ethan de Lange
Keiziah Rajapakshe
Doris Tan
Cyrus Zhang
Yuxin Li
John Wu
Ray Chen
Denise Zhong
Yew Wei Huang
Yining Fu
Chen Fan
Lucas Liang
Amina Karimi
Kanishka Parikh
Ram Veerappan
Raima Rattan
Evan Huang

Silver Award (10% globally)

Nico Zeng
Ahmed Afridi
Rio Carron
Jaimee Chow
Saima Rao
Clennon Wang
Selitema Gallaher
Jaime Ray
Ian Zhang

Bronze Award (20% globally)

Ellie Yan
Di Wang
Shaurya Kumar
Mallech Chetty
Ada Fang
Eric Liu
Milla McLean
Trishona Adhikari
Seth Foster
Archer Pan
Dorothy Taogaga
Haiqing Feng
Dwayne Vyas
Linda Liu
Daniel Hu

Lynfield College Social Media

'Follow' the Lynfield College [Instagram](#) page and 'Like' the Lynfield College [Facebook](#) page to stay up to date with school events and notices.




Have you downloaded our SchoolBridge App yet?

If your child is going to be away from school for the day, please let the school know via the SchoolBridge App. Information was sent to families on 22 May, on how to download this app.

- This App allows you to **view** and **approve** permission forms for trips and activities.
- Report **absences** and request an exit pass.
- View **Assessment** Calendars (for Year 12 and 13 initially).
- See your child's **attendance, reports, results and NCEA summary**.

Feedback from parents already using the app has been positive. More information can be found here: <https://shorturl.at/aqAH2>



We have a new Portal and App called **SchoolBridge**. SchoolBridge provides a personalised dashboard that is synced with access to the KAMAR calendar, parent student teacher interviews, student timetable, and assessment calendar in one convenient location. Additionally, you will be able to report absences, approve trips or pay fees quickly.


You can access the dashboard from the website under the **portal** or bookmark this link <https://lynfield.bridge.school.nz/>

To log in to the dashboard, please follow these simple steps:


1. Open the following link: <https://lynfield.bridge.school.nz/>
2. Click on "Caregivers" Or "Students"
3. Sign in using the email address registered in our system.

While the school will still send out **emails** we plan to send out quick push notifications via the **SchoolBridge App** so we recommend downloading the App.

Download the **SchoolBridge App** for access to all the features available on your dashboard.



App Store



Play Store

Should you have any issues logging in please contact the main office in the first instance - admin@lynfield.school.nz



Fan Club Ekko Park Gig Review

My favourite part about witnessing **Fan Club** on Friday 10th May, was the immediate recognition that they were a band with a clearly unified sound and aesthetic. They sounded uniquely like themselves, yet also drew from the grunge palette of **Nirvana**, the dreamy modern pop of **Wolf Alice** and the kiwi indie charm akin to **The Beths**.

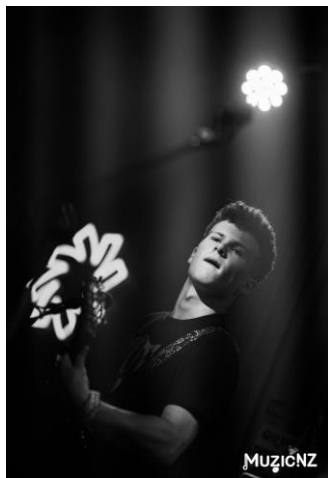
Their stage performance confident and seemingly effortless. **Tilly** was on the bass, her eyes closed, detached and on her own plane without missing a note. Juxtaposed with the frenetic punk rock energies of **Caleb** on the 6 string and **Tom** behind the kit. Frontwoman **Emma**, celebrating her 17th birthday, was in fine voice. She's able to yell where the emphasis required or lean powerfully into the deeper, more textured qualities of her voice.

I found myself humming along to melodies and singing words by the second chorus of songs that were new to me. **Fan Club** have a genuine knack for the earworms. I recommend the singles *Westbound* and *Never Ever* as appropriate starting places for the different shades of music that this band can serve up. Highly recommended, I look forward to seeing them again.

Read whole article here: <https://13thfloor.co.nz/ekko-park-big-fan-may-10-2024-concert-review/>

Please pre-save their new single Rough at this link: <https://music.drm.co.nz/rough-fc>

And come to one of their upcoming shows at The Tuning Fork



Mystery Musical Production

Lynfield College's annual school production is BIG this year! So big that we have to keep it under wraps. Due to licensing restrictions, we can't publicise the name of this well-known show. Featuring a live band and a huge cast of singers, dancers, and actors. Let's just say that you'll be bopping to that beat the whole night long ... because you just can't stop the beat!

DATES: Wednesday 19 June to Saturday 22 June 2024.

Tickets for this year's musical production are now on sale at the following link: <https://www.trybooking.com/nz/events/landing/12327>



2OED Tāwharanui Camp

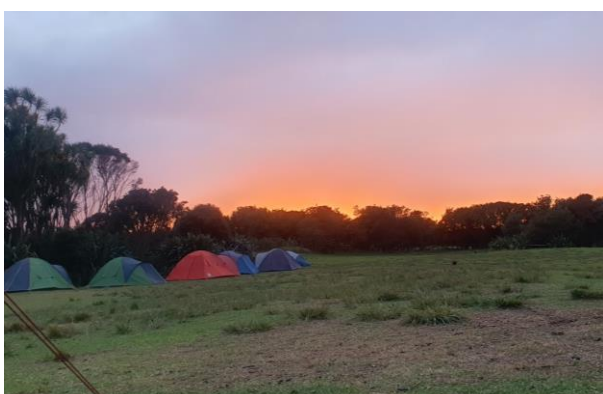
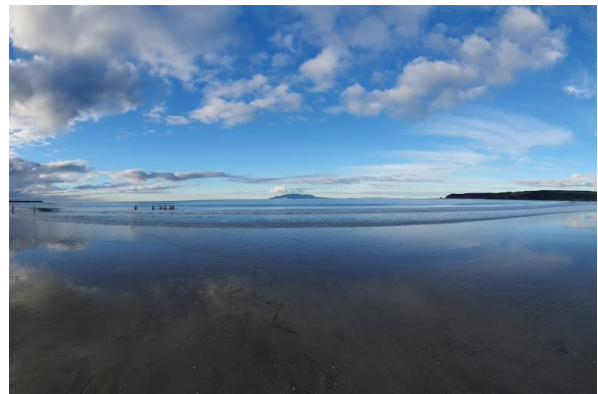
Last week, all three Year 12 Outdoor Education classes experienced their first practical assessments, camping outdoors at the beautiful Tawharanui Peninsula. Split between two camps, one from Monday to Wednesday and the other from Wednesday to Friday, we spent the days learning, building and developing our outdoor skills, surrounded by the environment.

Each day had its own list of activities, experiences and assessments, starting with pitching tents, going on a navigation exercise to get to know the area and going on a kiwi lookout walk on the first night. Trekking along the rolling hills during an eventful 13 km hike, further tested our navigational skills as well as our teamwork on the second day. Ending the camp with our final navigational assessment on the last morning before packing up the campsite and returning to school.

As being prepared was one of assessments, we knew the weather would take a turn as the camps went ahead. While we were lucky enough to have mostly calm and still weather throughout the week, there were a couple times the weather took a turn as a low came through bringing wind and rain especially on Tuesday night. But this definitely didn't stop anyone from making new memories. Some highlights experienced by both camps were the seals seen by the rocks at Takatu point, our national kiwi making appearances throughout the nights, and the picturesque sunrises camp 2 were able to witness.

A big thank you to Mrs Reynolds and Mr Ilaua for planning this camp as well as Mr Revell and Mr Christie for putting up with us, helping us through this first OED camp and sacrificing your time. Special thanks to Mrs Reynolds who spent the entire week down in the bush with both camps!

Srinidhi Totha (12ISD)



Individual Sport Honours

Congratulations to these three incredible athletes, who have been selected by Netball Waitakere to compete in several competitions as well as a North Island Tournament later this year.

Fiona Siaopo | U18 2 Netball Waitakere

Agnes Wulf | U16 2 Netball Waitakere

Sione Apelu | U18 1 Netball Waitakere Mens



*Fiona Siaopo
Sports Captain*



*Agnes Wulf
House Captain*



*Sione Apelu
House Captain*

Sports Scene

HOUSE COMPETITIONS

Junior Volleyball is underway with 4 round robin games played and finals held this Thursday. Seniors will follow on and start their house volleyball competition next week.

Netball will be the next House competition and will start in the beginning of Term 3.

Getting Physical!

Term 2 has kicked off with a hiss and a roar, with a number of programmes running each week here at Lynfield College.:

Social Badminton is set to begin in week 5 during lunch times in the upper gym.

Social Volleyball is underway during lunchtimes in the lower gym. All welcome, no experience needed

It's awesome to see so many students involved in a wide range of physical activities.

TEAM TALK

A massive thank you to all of our community and family coaches/managers/umpires who have been vital in getting our winter sports teams underway. These past few weeks we have managed to get all of our winter sports teams underway along with an in-school Badminton Championship. It's been great to see so many students taking part in their chosen sports these past few weeks and getting involved in extra-activities.

Spectators at games

Spectators are always welcome at games. It is great to see the interest and support from friends and family. It creates a lively and positive atmosphere.

A reminder, that our school is a smoke-free environment. This includes vaping. We ask that all spectators and players respect this policy.

We would prefer you don't bring your dogs to games. However, if you need to, we ask that they be leashed and under control at all times. To ensure the safety and comfort of all our visitors, we ask for your cooperation in maintaining control of any dogs brought to games.

Please remember that match officials are volunteers and are doing their best to provide an enjoyable game for all players. Please treat them with the kindness and respect they deserve.

Thank you for your understanding and efforts in helping us maintain a healthy and welcoming environment at our school.

Uniform & Stationery Shop

PLEASE NOTE:

Uniform Shop Closure Dates – The uniform shop will be closed Monday 27th and Tuesday 28th May. We apologise for any inconvenience this may cause.

HOURS

The Uniform and Stationery Shop is open to all students on site for their uniform and stationery needs during interval and lunchtime Mondays to Thursdays, and on Fridays before school at 8am and interval.

We are not open on Saturday and Sunday, Teacher Only Days or the between term holidays.

Parents can attend the shop at the following times:

Monday – Thursday: 10.00am – 12.00pm and 12.30pm – 1.30pm

Friday: 8.00am – 11.30am

ONLINE ORDERING

Online ordering is available through our website <https://www.lynfield.school.nz/shop.html>. Payment can be made by direct credit or credit card and students onsite are able to collect the items from the Shop during the above times.

Stationery packs are available in the shop and online for year 9 students. Stationery lists for all other year levels can be found on our website <https://www.lynfield.school.nz/site/lynfieldcollege/files/Stationery-Lists-2022.pdf> and all stationery items on the lists are available for purchase at the Uniform and Stationery shop.

For any further queries please email Alys Higgs at uniformshop@lynfield.school.nz

RETURNS POLICY

We require a purchase receipt and tags to still be in garments to process returns. Please be aware that we can only return items up to 90 days from the date on your receipt.

Lost Property

If your child has lost uniform items, please ask them to check the Lost Property bin outside the Uniform Shop

PLEASE REMEMBER TO NAME YOUR CHILD'S UNIFORM.

Laundry Markers can also be purchased from the uniform and stationery shop.

Young Māori & Pacific Pride Leaders present...

IPU TI

WEDNESDAYS

WEEKLY ACADEMIC WORKSHOP

- Unfinished work?
- Due dates looming?
- Need help?

3:15PM - 4:30PM

**JOIN US IN I2/I3
(END OF CORRIDOR IN THE UPPER GYM)**

Open to all students!

Community Notice

WATERCARE SERVICES - HUIA 1 WATERMAIN

Upcoming Potholing investigations on Boundary Rd, Blockhouse Bay

From Tuesday 21 May to Friday 24 May, Watercare Services will be undertaking potholing works to identify existing services on Boundary Road.

Traffic management will be set up as shown on the map below.

How will this affect you?

- Working hours will be Tuesday 21 – Friday 24 May from 9am – 3pm.
- Traffic management will be in place, as shown on the map below.
- Construction works will generate some noise and vibration. However, levels will be kept to a minimum and in accordance with Auckland Council and consent requirements.
- Please note that water supply to properties will not be affected during these works.

Thank you for your patience.

